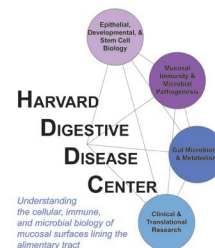
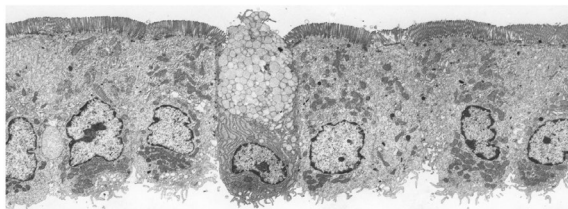


# Digestive Disease Research on Campus



**MONDAY, NOVEMBER 10, 2025**  
**Center for Life Sciences 12<sup>th</sup> Floor, Boston Children's Hospital**

**8:45 AM Coffee and Muffins**

**9:15 AM Keynote:**

**“Stem Cell Clonality and the Niche”**

**Leonard Zon, MD**

Grousbeck Professor of Pediatric Medicine, HMS  
Director, Stem Cell & Regenerative Biology Program, BCH  
HHMI Investigator

- 10:15 Subhash Kulkarni, MD, PhD** Assistant Professor Medicine, HMS and GI Division BIDMC  
*“An insight into metabolic dysfunction driving gastrointestinal dysmotility”*
- 10:30 Markus Basan, PhD** Associate Professor Systems Biology, HMS  
*“Designing combination strategies of antibiotics and probiotics to eliminate C. difficile from microbiota”*
- 10:45 Stephanie Hajjar, PhD** (Zhou Lab, BCH)  
*“pH sensing and innate immune circuits in the control of inflammation”*

**11:00 Coffee Break**

- 11:30 Paolo Cadinu, PhD** (Moffitt Lab, BCH and HMS)  
*“Fibroblasts in the firestorm of gut inflammation”*
- 11:45 Vanessa Mitsialis, MD** Assistant Professor Medicine, HMS (BCH and BWH)  
*“From cells to clues: Single-cell insights into VEOIBD, fibrosis, and emerging therapeutic targets”*
- 12:00 Songhua Hu, PhD** (Haigis Lab, HMS)  
*“Intestinal metabolic reprogramming by novel NAD<sup>+</sup> derived metabolites”*
- 12:15 Josh De Sousa Casal** (Ordovas-Montanes Lab, BCH)  
*“Colonic fibroblasts organize an inflammatory tipping point”*
- 12:30 Fernando Oliveira, PhD** (O’Connell Lab, Newborn Medicine, BCH)  
*“WNT2B in colonic homeostasis and colorectal cancer”*
- 12:45 Melissa Musser, MD, PhD** Instructor Pediatrics, HMS (Rao Lab, BCH)  
*“Intrinsic primary afferent neurons are not necessary for gut motility, but modulate gut peristalsis and secretion”*

**1:00 – 2:00 PM Lunch for all**

HDDC Directors: Wayne Lencer, MD & Richard Blumberg, MD

If you have any questions, please contact Farah Kools ([farah.kools@childrens.harvard.edu](mailto:farah.kools@childrens.harvard.edu))  
or Kiki Densamo ([kewbrewosen.densamo@childrens.harvard.edu](mailto:kewbrewosen.densamo@childrens.harvard.edu))

**[REGISTER HERE](#)**